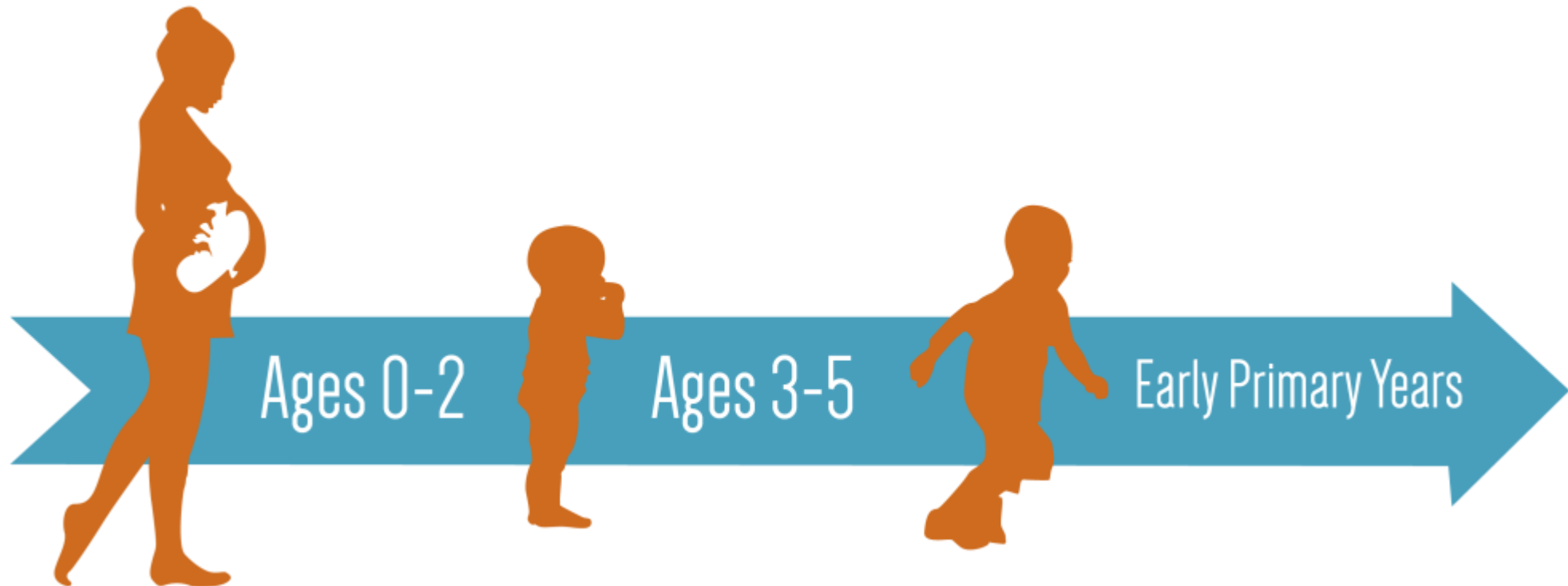


Care Breakouts: Diagnosis and Early Childhood

Brenda Wong, M.D.
Professor of Pediatrics and Neurology
Director, DMD program
U Massachusetts Medical School

Parent **JOIN THE FIGHT.**
Project **END DUCHENNE.**
Muscular
Dystrophy

Early Childhood



- “...**early childhood** as the period from birth to age eight,end with age eight because it reflects an important developmental milestone. Age eight corresponds to third grade, a critical year for mastery of the reading skills upon which further learning will build and a reliable predictor for future education success”
- <https://www.impact.upenn.edu>

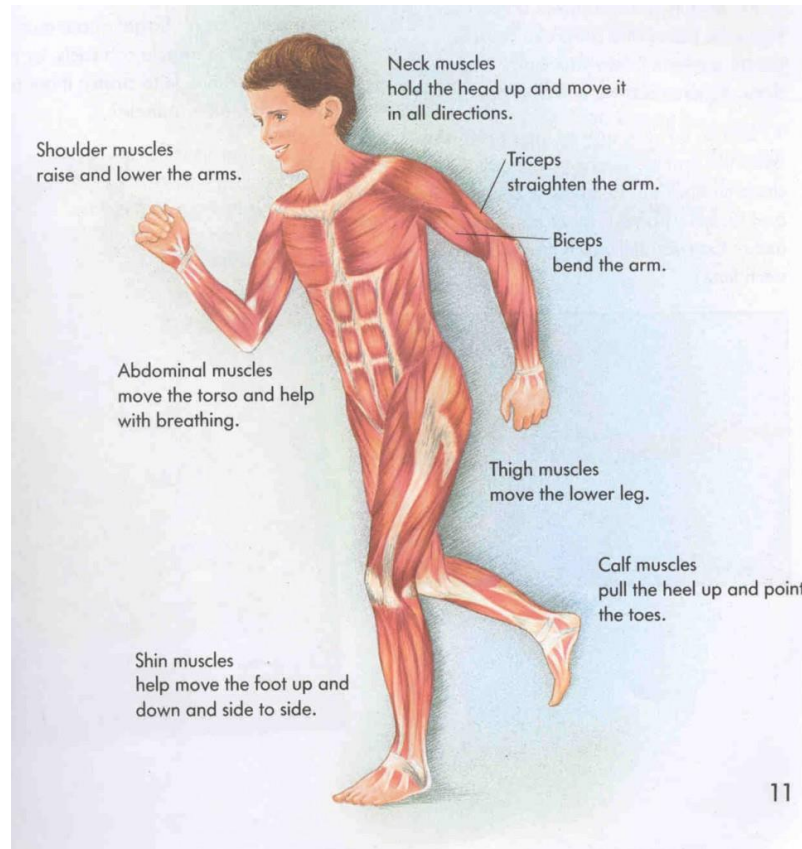
Diagnosis

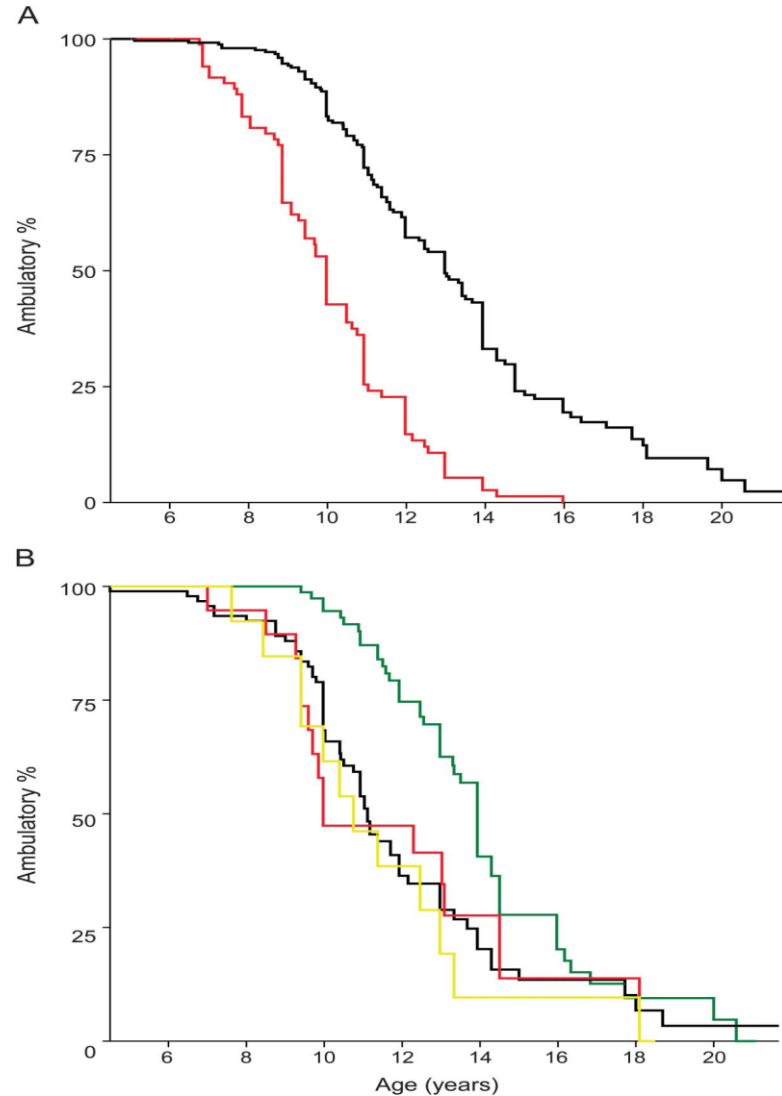


The patient with DMD

- **Motor function/dysfunction:**
 - strength
 - load (weight/BMI)
 - alignment
- **Growth, development and nutrition**
 - Height, weight, BMI
 - Bone health
 - Puberty
- **Cardio-pulmonary function**
- **Endocrine function – at risk for adrenal insufficiency (steroids)**
- **GI/GU function**
 - constipation
 - urinary problems
 - kidney stones
- **DMD and psycho-social function**
 - home, school, work
- **DMD and family : genetic counseling**
 - Moms and extended family

Musculoskeletal system



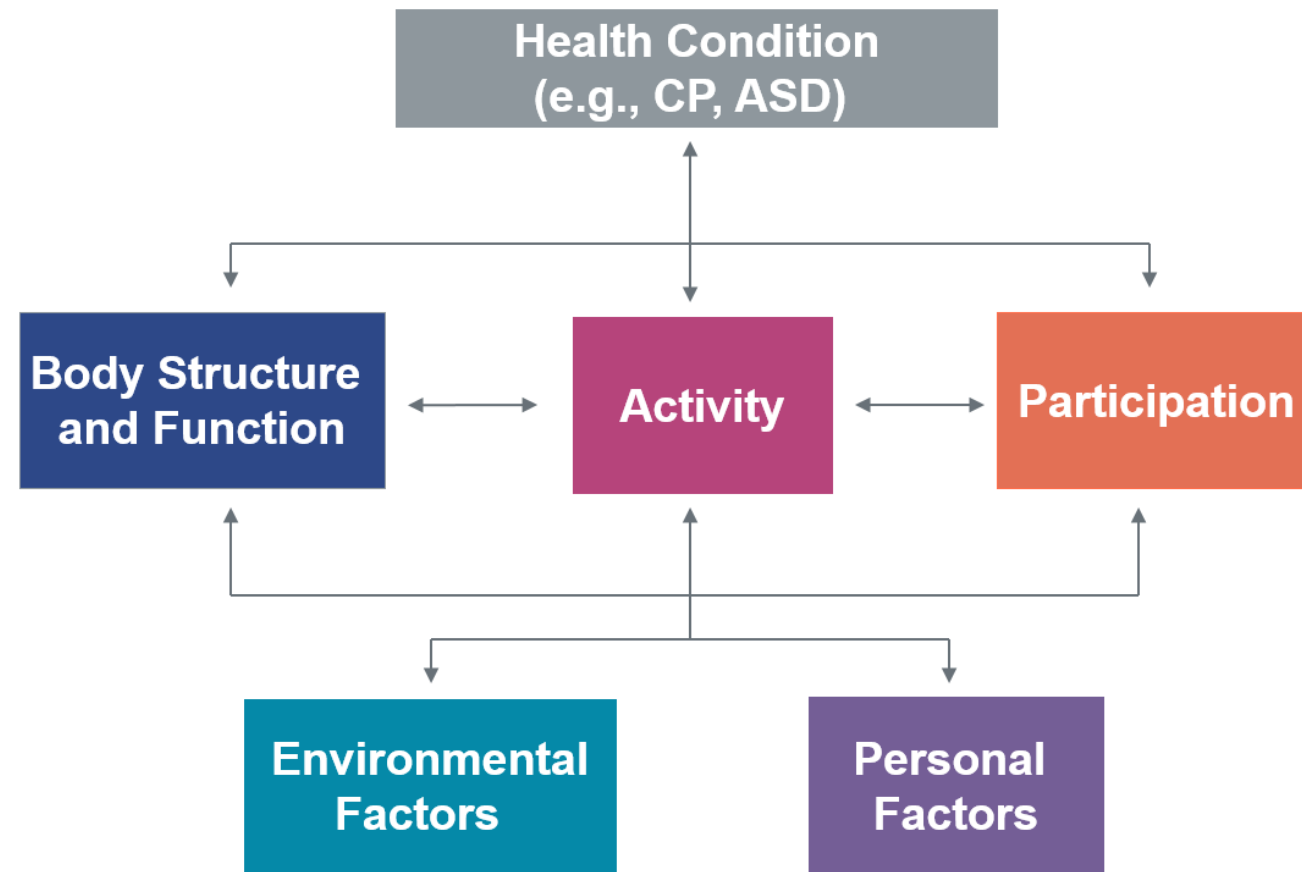


Prednisone/prednisolone and deflazacort regimens in the CINRG Duchenne Natural History Study.

Bello et al. Neurology 2015; 85: 1048-55

(A) Participants treated at least 1 year while ambulatory (n = 252, black line) vs participants treated less or untreated (n = 88, red line). (B) Participants treated with the most common drug-regimen combinations: daily PRED (n = 94, black line), high-dose 2 days/week PRED (n = 19, red line), low-dose intermittent PRED (n = 14, yellow line), and daily deflazacort (n = 80, green line). PRED = prednisone or prednisolone.

International Classification of Functioning, Disability and Health (ICF)



F words in Childhood Disability: holistic approach to life – and especially to childhood disability

Rosenbaum and Gorter, 2012

